

# 2021 Darwin Tenpin Cup



Oil Pattern Distance: **44 Feet**  
 Forward Oil Total: **16.65 mL**  
 Forward Boards Crossed: **333 Boards**

Reverse Brush Drop: **36 Feet**  
 Reverse Oil Total: **6.95 mL**  
 Reverse Boards Crossed: **139 Boards**

Oil Per Board: **50 uL**  
 Volume Oil Total: **23.6 mL**  
 Total Boards Crossed: **472 Boards**

Start	Stop	Loads	Speed	Crossed	Start	End	Feet	T.Oil
1	2L 2R	5	10	185	0.0	5.6	5.6	9250
2	10L 10R	1	14	21	5.6	7.5	1.9	1050
3	11L 11R	1	14	19	7.5	9.4	1.9	950
4	12L 12R	2	14	34	9.4	13.3	3.9	1700
5	14L 14R	4	18	52	13.3	23.5	10.2	2600
6	15L 15R	2	18	22	23.5	28.6	5.1	1100
7	2L 2R	0	22	0	28.6	38.0	9.4	0
8	2L 2R	0	26	0	38.0	44.0	6.0	0

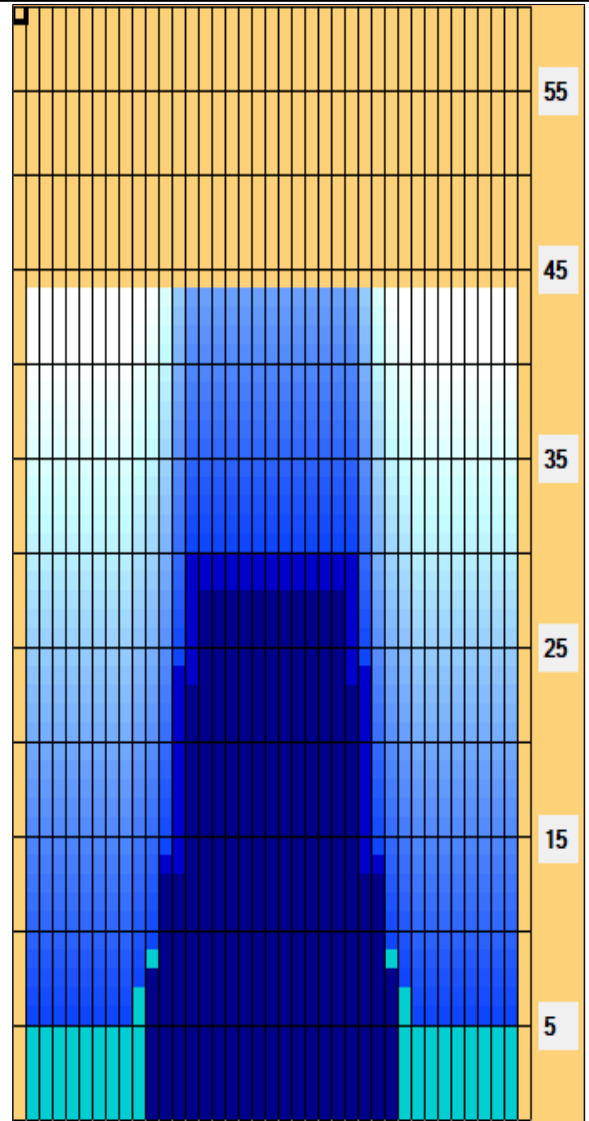
Conditioner: Type In or Select One  
 TransferType: Type In or Select One

Forward Reverse More

Start	Stop	Loads	Speed	Crossed	Start	End	Feet	T.Oil
1	2L 2R	0	30	0	44.0	30.0	-14.0	0
2	14L 14R	2	22	26	30.0	23.8	-6.2	1300
3	13L 13R	4	18	60	23.8	13.6	-10.2	3000
4	12L 12R	2	18	34	13.6	8.5	-5.1	1700
5	11L 11R	1	14	19	8.5	6.6	-1.9	950
6	2L 2R	0	10	0	6.6	0.0	-6.6	0

Forward Reverse More

- Forward
- Reverse
- Combined
- Buff



Item	3L-7L:18L-18R	8L-12L:18L-18R	13L-17L:18L-18R	18L-18R:17R-13R	18L-18R:12R-8R	18L-18R:7R-3R
Description	Outside Track:Middle	Middle Track:Middle	Inside Track:Middle	Middle: Inside Track	Middle:Middle Track	Middle:Outside Track
Track Zone Ratio	4.8	3.33	1.09	1.09	3.33	4.8

